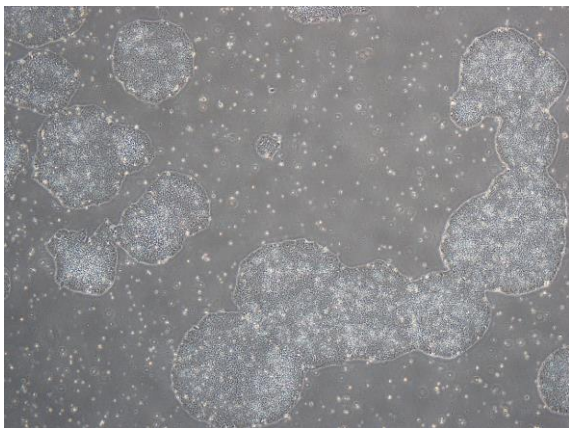
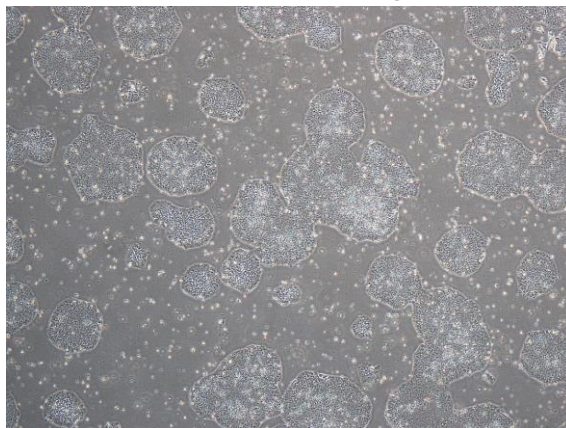


【 CiRA-j-1054 】 Morphology of iPSC colonies

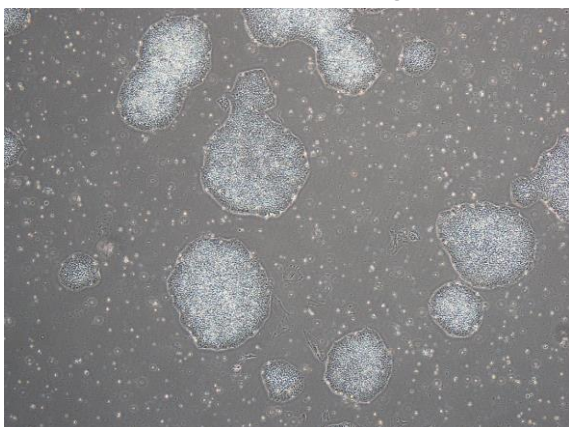
CiRA-j-1054-A: passage-2



CiRA-j-1054-B: passage-2



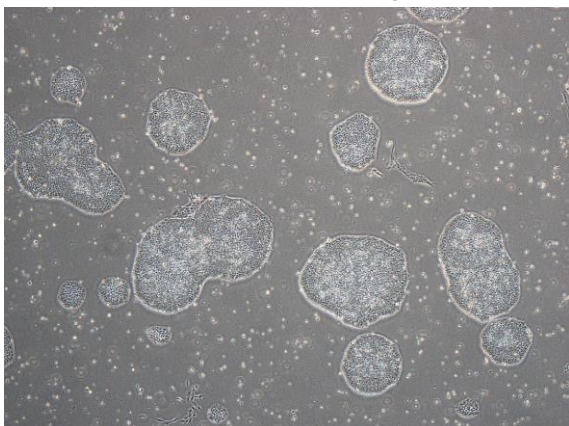
CiRA-j-1054-C: passage-2



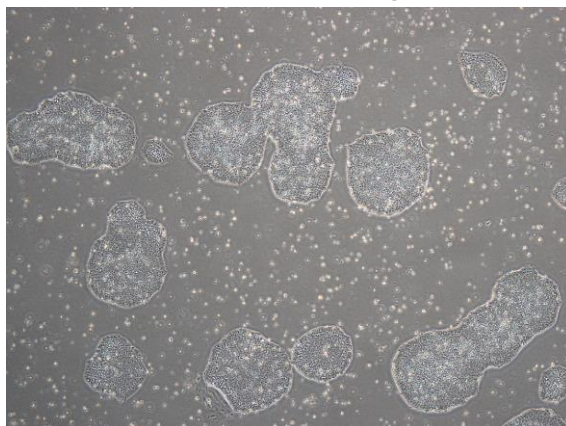
CiRA-j-1054-D: passage-2



CiRA-j-1054-E: passage-2



CiRA-j-1054-F: passage-2



(All images were captured at 4x magnification)